



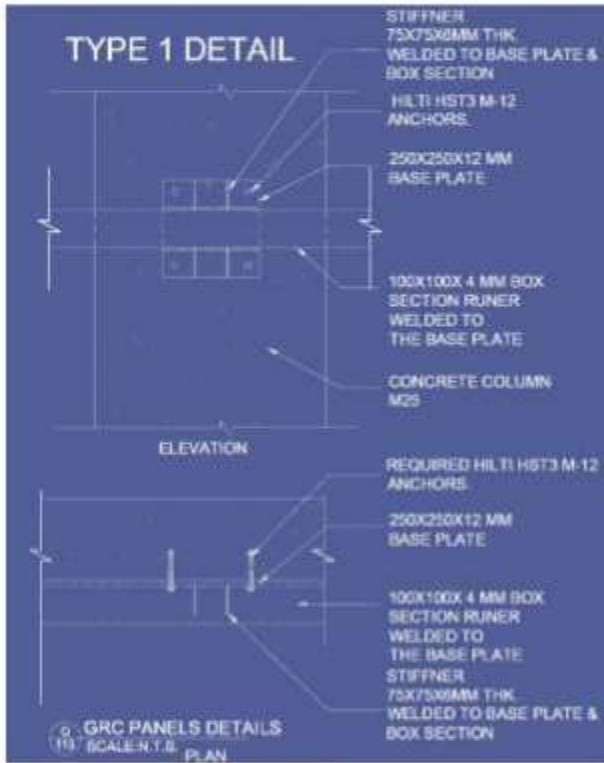
# **OBEROI WORLI** **THREE SIXTY WEST**



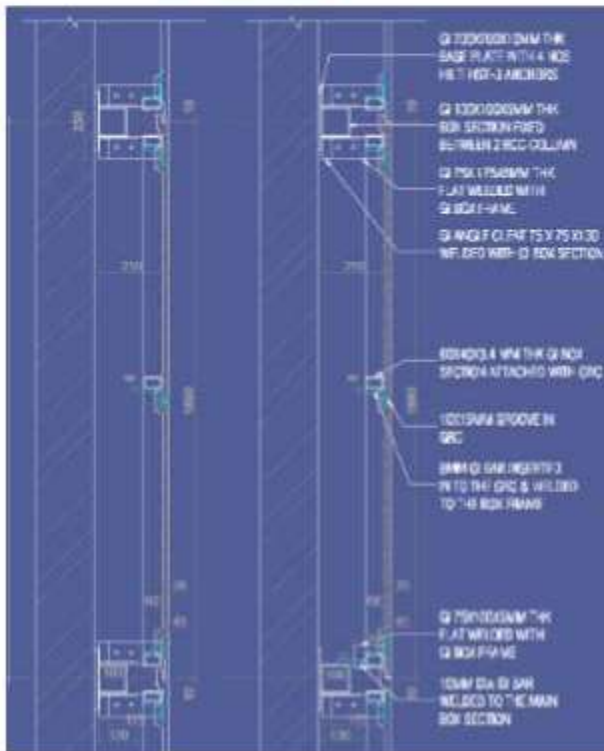
**Sanderson Group** has been awarded this prestigious high-end luxury project by **Oberoi Realty** for the **Thematic Cladding** of the **Ramp Facade** and the **10-storeys 50-meter-high Podium Cladding** with specialized panels in **GFRC** having various sizes starting from **1.5x2 meters Panels**, to simulate a natural **Dholpur Stone Effect**.

**Oberoi Three Sixty West** is a mixed-use development project located in **Worli, Mumbai** consisting of **Two High-Rise Towers** and one of them houses the **Ritz-Carlton Hotel** which has a **Ramp Façade & Driveway**. **The Ramp Façade is Cladded with customized GFRC Panels & the Driveway** leads to the second **Residential Tower** that includes a **10-storey Podium Parking Façade, also Cladded with GFRC Panels of Sanderson Group.**

### GFRC CLADDING



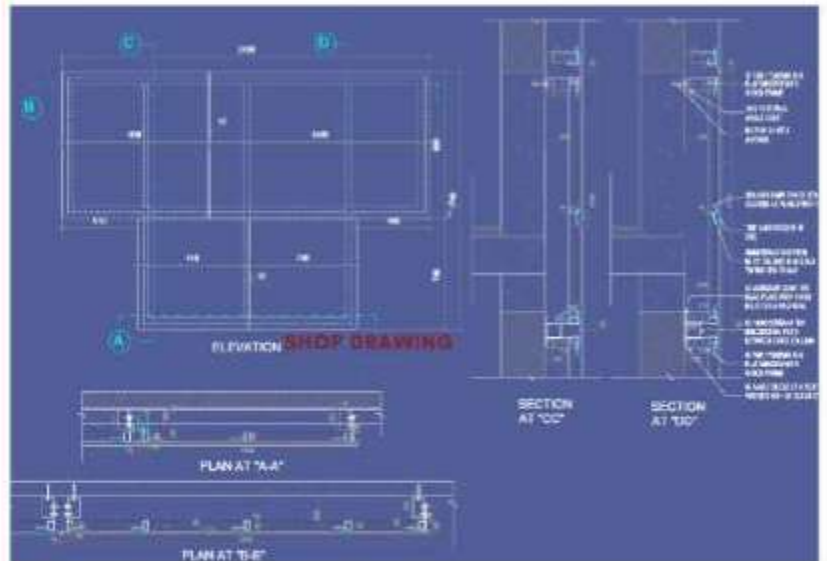
SHOP DRAWING



SHOP DRAWING

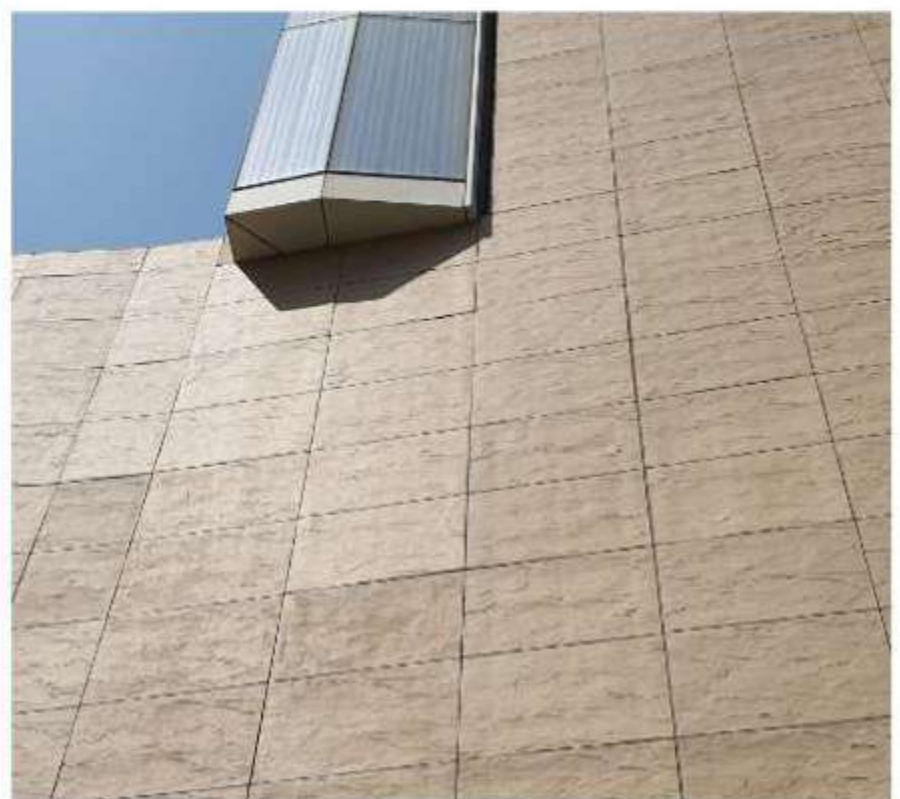
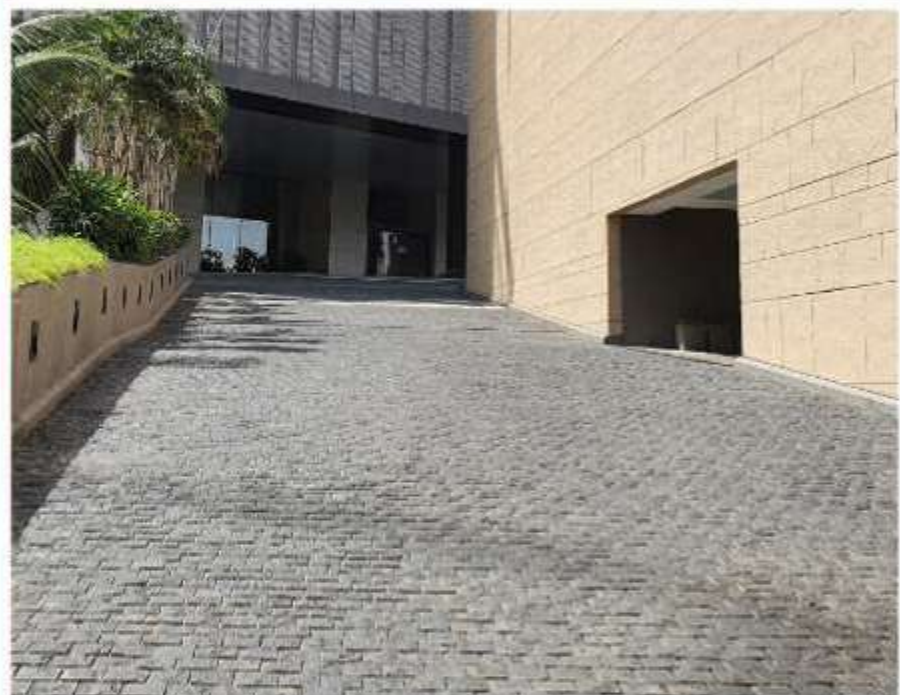


Customized Heavy Duty Frames

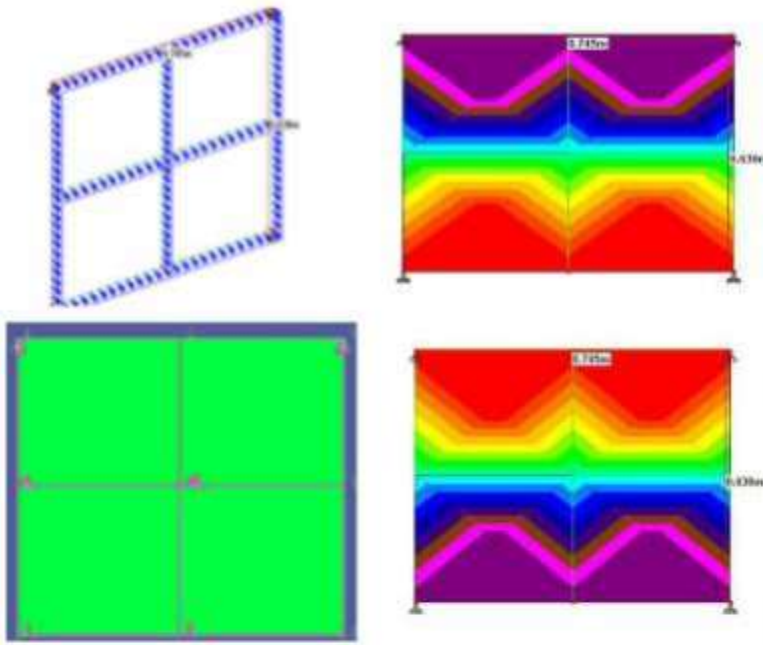


These frames were embedded into the exquisitely carved GFRC panels to give it additional strength and durability without compromising to the Client’s architectural vision for the artistic façade.





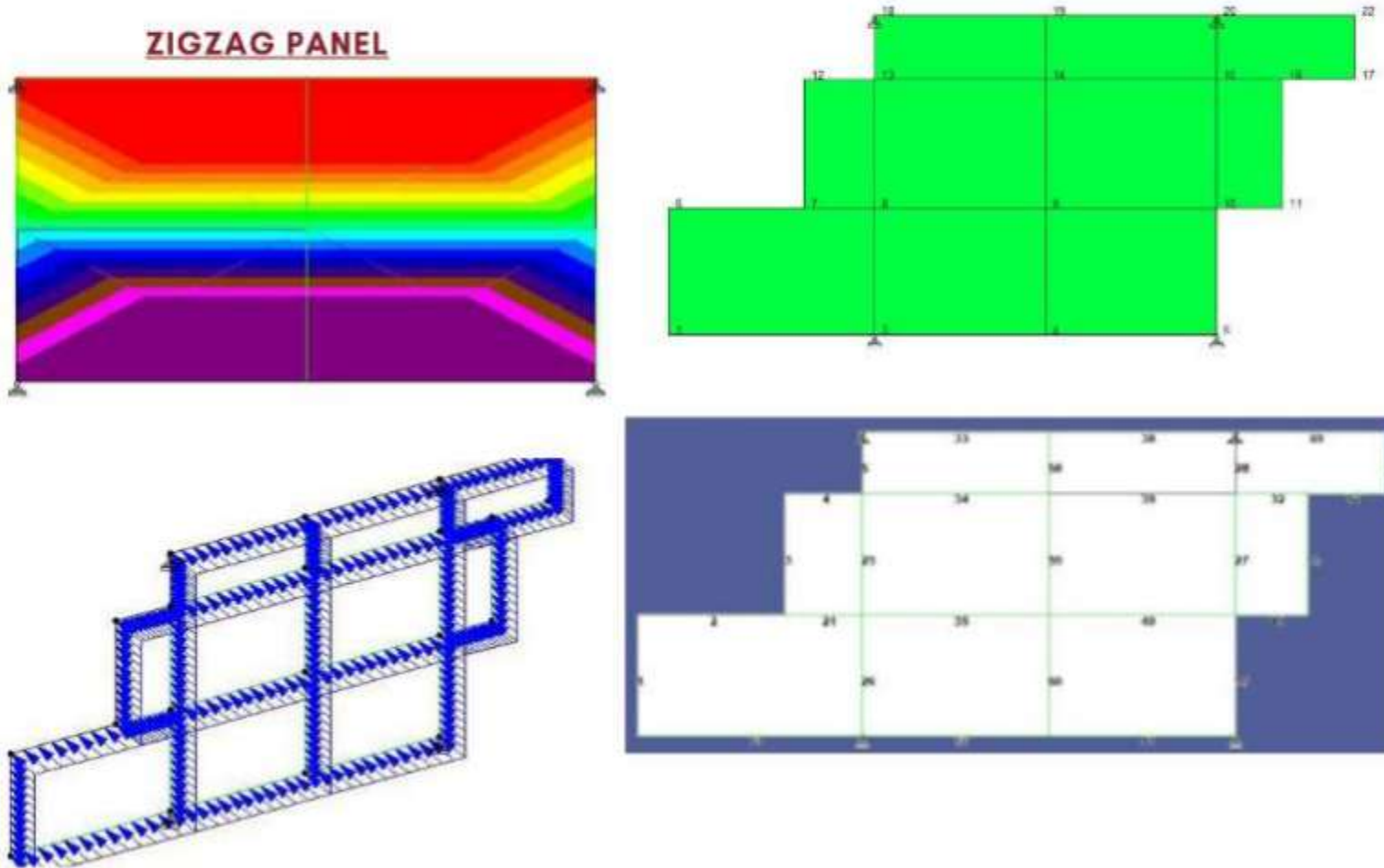
**SQUARE PANEL**



**Sanderson Group**, in coordination with **Meinhardt Group, Structural Consultant**, appointed by the client, designed the panel with a customized wall of structural frames made in-house by our under stringent internal QA/QC process.

Maximum Size Of Panel	: 1.5 m x 2 m
Panel weight	: 110Kg
Panel Thickness	: 20mm
Wind Load	: 3Kpa
Total Weight	: 0.3kN (As per analysis)

**ZIGZAG PANEL**



Maximum Size Of Panel	: 2.0 m x 1.24 m
Panel Weight	: 95 Kg
Panel Thickness	: 20 mm
Wind Load	: 3 Kpa
Total Weight	: 1.6 kN (As per analysis)



# SAFETY AWARD

The client's appointed **Project Main Consultant, Samsung CNT**, appreciated **Sanderson Group** commitment to the quality and safety standards.

